

Project Name	Type
Catalog #	Date

# ADJUSTABLE CABLE HANGER

## Y-TOGGLE



### APPLICATION

- Recommended for the suspension of hanging luminaires in an indoor application.

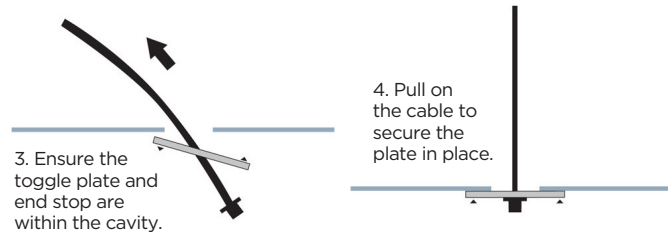
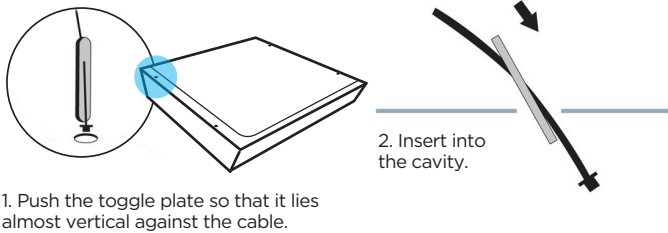
### APPROVALS:

- UL Listing - UL1598 Luminaire Fittings
- CSA - Class 3426-01 Luminaire Fittings

### FEATURES

- Safe-working load at 5:1 safety factor.
- Tool-less adjustment.
- Replaces threaded rod; no sawing, filing or fixing nuts.
- Reduces installation time by 80%.
- No need for additional bracketry.

### GENERAL INSTALLATION



### MATERIAL SPECIFICATION

**Fastener:** Housing: Zinc  
Wedges: Steel  
Springs: Stainless Steel  
End Cap: Acetal Copolymer  
Push Button: Acetal Copolymer

**Cable:** Galvanized high tensile steel cable to EN12385

**Y-Assembly:** 12" legs are standard. Other lengths by request.

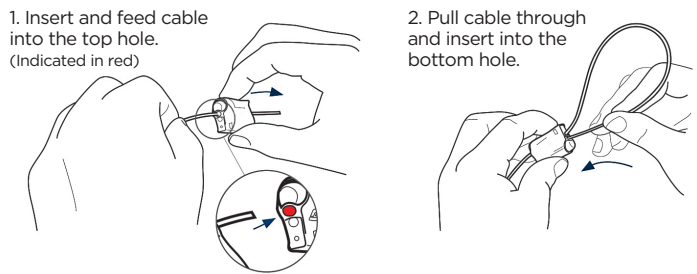
**Toggle & End Stop:** Zinc plated Steel

**Crimp/Ferrule:** Aluminum

### ORDER LOGIC

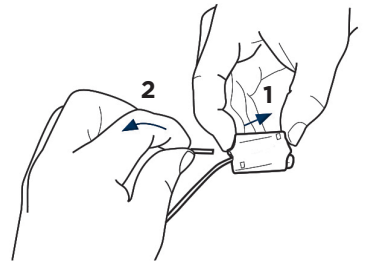
MOUNTING	OPTION
CB Adjustable Cable Hanger	A
	B
	C
	D

### GRIP DEVICE ADJUSTMENT



### GRIP DEVICE RELEASE

1. Push in button to release.
2. Adjust cable to necessary length.



**Note:** Please Specify Sizes When Ordering From Customer Service.

### APPLICATION EXAMPLE

Angle between legs of 'Y' not to exceed 60°

