

---

## **IMPORTANT SAFETY INSTRUCTIONS**

---

**THIS PRODUCT MUST BE INSTALLED IN ACCORDANCE WITH THE APPLICABLE INSTALLATION CODE BY A PERSON FAMILIAR WITH THE CONSTRUCTION AND OPERATION OF THE PRODUCT AND THE HAZARDS INVOLVED.**

**CE PRODUIT DOIT ÊTRE INSTALLÉ SELON LE CODE D'INSTALLATION PERTINENT, PAR UNE PERSONNE QUI CONNAÎT BIEN LE PRODUIT ET SON FONCTIONNEMENT AINSI QUE LES RISQUES INHÉRENTS.**

---

1. READ AND FOLLOW ALL SAFETY INSTRUCTIONS.
2. INSTALLATION REQUIRES KNOWLEDGE OF LED LIGHTING AND ELECTRICAL SYSTEMS. RISK OF FIRE OR ELECTRICAL SHOCK EXISTS.
3. DO NOT MAKE OR ALTER ANY OPEN HOLES IN AN ENCLOSURE OF WIRING OR ELECTRICAL COMPONENTS DURING KIT INSTALLATION.
4. DO NOT EXPOSE WIRING TO EDGE OF SHEET METAL OR OTHER SHARP OBJECTS IN ORDER TO PREVENT WIRING DAMAGE OR ABRASION.
5. THE LED LUMINAIRE MUST BE WIRED IN ACCORDANCE WITH THE NATIONAL ELECTRICAL CODE AND APPLICABLE LOCAL CODES.
6. PROPER GROUNDING IS REQUIRED FOR SAFETY.
7. THIS LED LUMINAIRE MUST BE INSTALLED PER THE APPLICABLE

INSTALLATION CODE BY A PERSON FAMILIAR WITH THE CONSTRUCTION AND OPERATION OF THE PRODUCT. DO NOT ATTEMPT INSTALLATION IF THIS CONDITION IS NOT MET. CONTACT A QUALIFIED ELECTRICIAN.

8. DO NOT USE THIS LUMINAIRE FOR ANYTHING OTHER THAN ITS INTENDED USE.

**9. DANGER-RISK OF FIRE OR ELECTRICAL SHOCK-DISCONNECT POWER BEFORE BEGINNING INSTALLATION.**



---

## INSTALLATION

---

**THIS LUMINAIRE IS SUITABLE FOR RECESSED CEILING MOUNT ONLY.**

1. Slide the Housing to fit through the Tee Grid Bar and seat on the upward edge of the Tee Bar.
2. Bend Pre-installed Tee Grid Bar Clips to secure the luminaire in the Tee Grid System (Figure 1).
3. Connect wires as shown in wiring diagram (Figure 2)

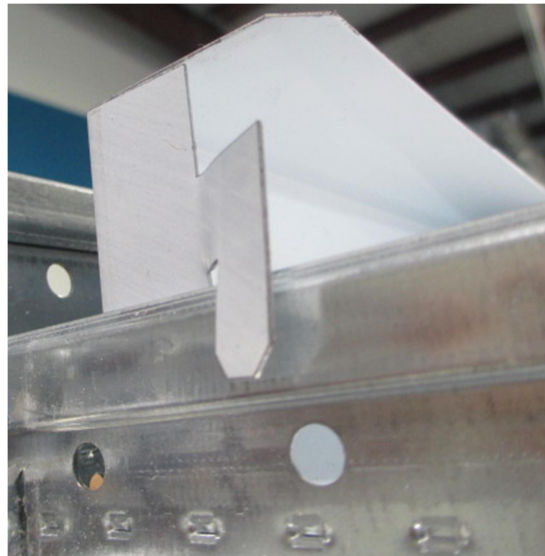


Figure 1

---

## WIRING

---

Universal driver: 120VAC - 277VAC, 50/60HZ.

1. Verify that the electrical power to the Luminaire is in the OFF position.
2. Connect the driver black lead to Line supply lead.
3. Connect the driver white lead to Neutral supply lead.
4. Connect the ground wire to fixture ground.
5. Energize the electrical power and verify for proper operation.

### Wiring Diagram

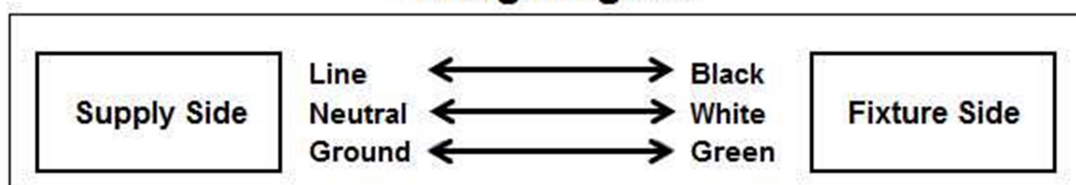


Figure 2